



Highlighting history and nearby points of interest, the portion of the Enka Heritage Trail that runs through the Enka Sports Complex acts as an inviting way to extend time spent in the area and an experience unique to Buncombe County. Each storytelling station offers a peek into the Enka community's past, presented creatively with imaginative examples of public art. The Enka Heritage Trail also acts as a connector to restaurants, retail shops, and tourism businesses located along Smoky Park Highway.

RIVER CANE CONSERVATION 2

River cane was historically very important to both humans and wildlife in the mountains. The Eastern Band of Cherokee Indians (EBCI) split it lengthwise and made coverings for walls of their houses, woven baskets, and fire-forged darts for hunting. The re-establishment of natural canebrakes is important to the EBCI, as it reinforces their cultural heritage and provides supplies for beautiful and useful crafts.



HOMINY CREEK 3

Original inhabitants were drawn to the area because of Hominy Creek, a clean source of drinking water. Later settlement of the area involved not only the clearing of woods, but also the building of gristmills and sawmills powered by water, creating the area's first industry. The flowing creek would also act as the catalyst for the Enka community's greatest transformation when American Enka located to the area in 1928.

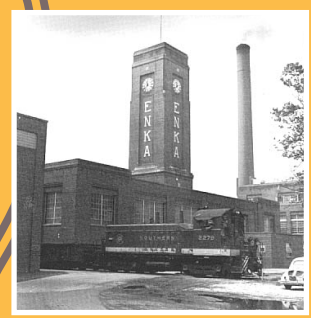
WNC RAILROAD 5

This rehabilitated historical railroad trestle stands near the important Murphy Branch, the westernmost part of what was the Western North Carolina Railroad. This line opened up isolated and rural mountain communities west of Asheville to the outside world in the late 19th and early 20th centuries, allowing easy travel and improved commerce. It can easily be said with confidence that these tracks made western North Carolina what it is today.

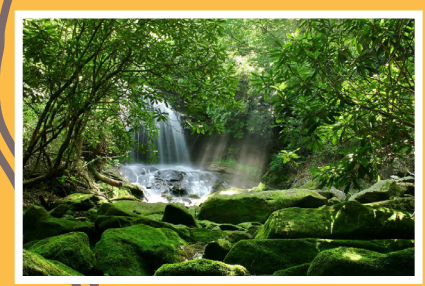


1 HISTORIC CLOCK TOWER

While Enka did not completely escape the effects of the Great Depression, the Dutch company *Nederlandse Kunstzijdefabriek* built a rayon factory that would become the largest in the nation. In fact, it is from the phonetic pronunciation of the initial letters N and K of the firm's name that "Enka" is derived. Thousands of jobs acted as a lifesaver for many Enka families. The iconic clock tower remains as a tribute to the factory's importance to the community's development.



4 APPALACHIAN RAINFOREST



Western North Carolina is part of the Appalachian temperate rainforest. Many native plants form an ecosystem with a high rate of biodiversity. About 10,000 species, including salamanders and turtles only found here, live in this rainforest. Though threatened

over time by pollution, fire, and non-native species, the Enka community has instituted many rehabilitation projects over the years to preserve the unique bionetwork found in the streams and forests of the area.

These stops are representative of Enka Heritage Trail stations, but may change before the trail is complete. This portion of the trail will likely have 10-15 stations.

ENKA RECREATION DESTINATION

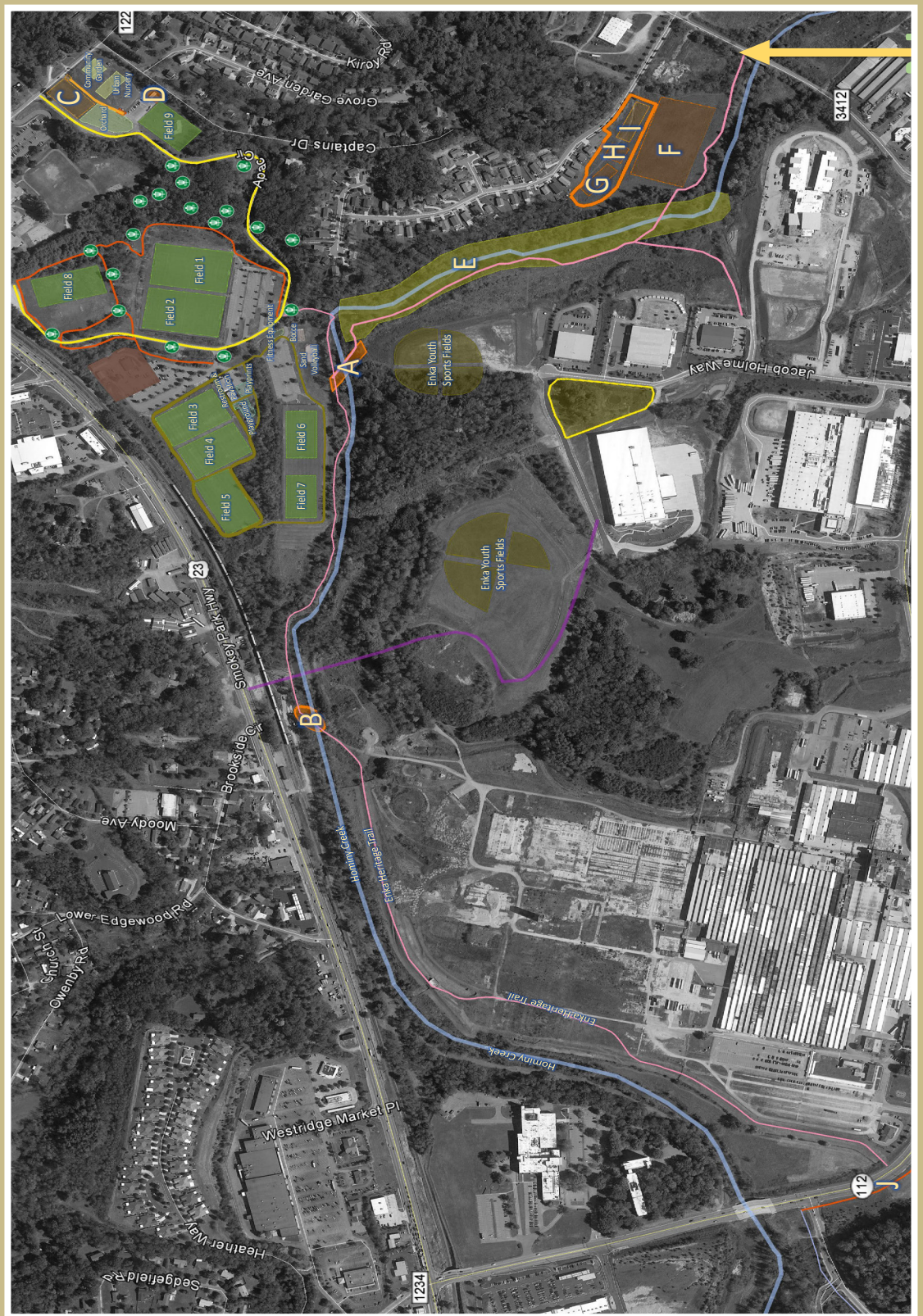


BUNCOMBE COUNTY RECREATION SERVICES



BUNCOMBE CO. SPORTS PARK, AND BOB LEWIS BALLPARK, AND ENKA HERITAGE TRAIL IMPROVEMENTS

- A** Pedestrian Connector Bridge
- B** Repurposed Railroad Trestle
- C** Dog Park
- D** Education Pavilion + Restrooms
- E** River Cane Interpretive Area
- F** Multi-Use Athletic Field
- G** Challenge Course
- H** Yalp Toro (4-Way Soccer/Hockey Course)
- I** Athletic Agility Course
- J** Sidewalk Connection to Biltmore Lake



This unique aspect of the Enka Sports Complex connects visitors to the Enka community's deep culture and history. Like the Urban Trail in downtown Asheville or the Swamp Rabbit Trail in Greenville and Travelers Rest, the trail not only promotes an active lifestyle, but informs users of nearby points of interest and provides an easier connection to businesses and lodging on Smoky Park Highway and Sand Hill Road. It will eventually connect to existing or planned greenways stretching to Bent Creek, The North Carolina Arboretum, and Asheville Outlets.

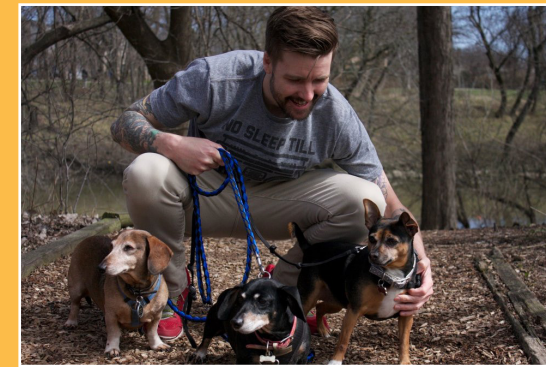
FIELD IMPROVEMENTS

Capitalizing on Buncombe County's reputation as a top tournament destination for soccer, softball, and baseball, the addition of turf and lights brings an additional 20 weekends online for new business, including lacrosse. At the same time, it allows existing events to add as many as 30 additional teams for each soccer tournament. Tournaments at Bob Lewis Ballpark also showcase our area's profile through visits from college coaches recruiting athletes.



BUNCOMBE CO. SPORTS PARK EXPANSION

An enhanced entrance creates a gateway to sports fields, spectator areas, and the Enka Heritage Trail. The new dog park, new restroom pavilion, and updated community garden reflect the Enka community's welcoming culture. New challenge and agility courses and Yalp Toro can bring Cross-Fit and other new events to the complex. Expanded exit lanes connect visitors with nearby eateries, retail stores, and tourism businesses while preserving the natural buffer between the park and street.



DOG PARK



YALP TORO



RESTROOMS + CLASSROOM WITH WIFI

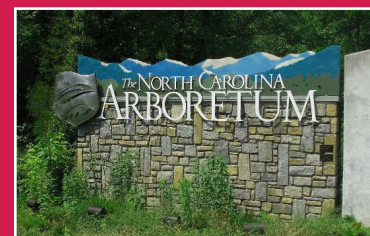


CENTRALLY LOCATED

Popular restaurants, shopping centers, and tourist attractions are minutes away from the Enka Sports Complex. The Enka Heritage Trail will eventually connect to existing or planned greenways stretching to Bent Creek, The North Carolina Arboretum, and Asheville Outlets.

ENKA RESTAURANTS + HOTELS NEARBY

- WNC FARMER'S MARKET 3.6 MILES
- HISTORIC WEST ASHEVILLE 3.9 MILES
- ASHEVILLE OUTLETS + HOTELS 4.1 MILES
- N.C. ARBORETUM 5.7 MILES
- BLUE RIDGE PARKWAY 5.8 MILES
- RIVER ARTS DISTRICT 6.7 MILES
- BILTMORE 6.8 MILES
- HISTORIC BILTMORE VILLAGE + HOTELS 6.9 MILES
- DOWNTOWN ASHEVILLE + HOTELS 7.5 MILES
- LAKE POWHATAN 7.6 MILES
- BILTMORE PARK + HOTELS 9.2 MILES
- LAKE JULIAN 10 MILES
- ASHEVILLE AIRPORT + HOTELS 12.3 MILES



A GREAT INVESTMENT

Enhancing Enka as a recreation destination through improvements to Buncombe County Sports Park, Bob Lewis Ballpark, and the Enka Heritage Trail shows a return on investment with just four additional sports tournaments each year. *(Estimated new business adds to 9,620 annual room nights currently generated by the complex.)*

ESTIMATED NEW ROOM NIGHTS				
	YEAR 1	YEAR 2	YEAR 3	3-YR TOTAL
ENKA HERITAGE TRAIL	2,844	3,982	5,575	12,401
BOB LEWIS BALLPARK	1,728	3,888	4,320	9,936
ABYSA	2,974	5,812	9,289	18,075
TOTAL	7,546	13,682	19,184	40,412

In addition to extending available play time, improvements to the Enka Sports Complex present opportunities for new sports events such as **multi-sport festivals, cycle cross, disc golf, and Cross-Fit**, as well as non-sports events including **craft beer and wine festivals, concerts, an Enka community gathering, and other regional events** leveraging the draw of Buncombe County as a destination and the complex as a quality facility with excellent amenities.